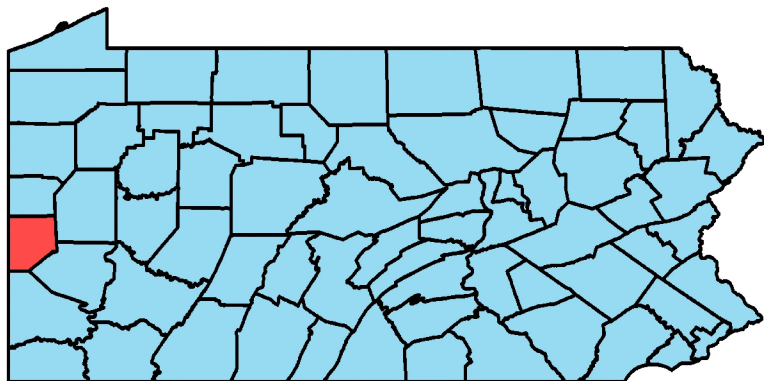
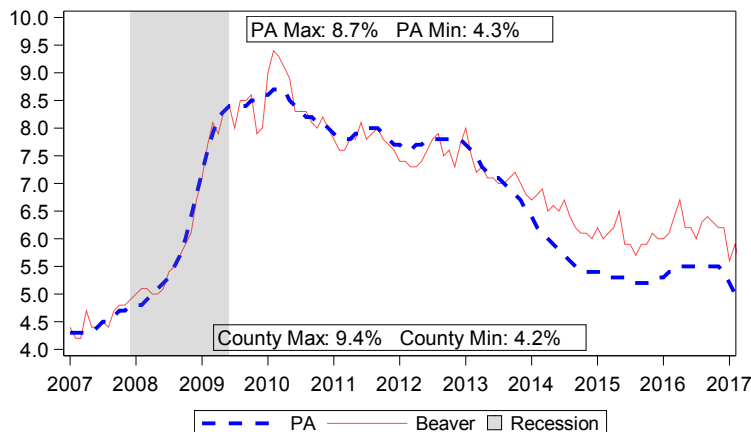


Beaver County Profile

January 2018



Unemployment Rate, Jan 2007 to Dec 2017



2016 Population		
Demographic	County	PA
Total Population	169,205	12,783,977
Female	87,180	6,528,935
Male	82,025	6,255,042

Population by Race		
White	90.9%	81.4%
Black	6.1%	11.0%
Other	3.0%	7.6%
Hispanic Origin (all races)	1.4%	6.6%

Population by Age		
Ages 0 to 17	19.8%	21.2%
Ages 18 to 24	7.8%	9.6%
Ages 25 to 34	11.5%	12.8%
Ages 35 to 44	11.1%	11.9%
Ages 45 to 54	14.6%	14.1%
Ages 55 to 64	15.6%	13.8%
Ages 65 to 74	10.2%	9.0%
Ages 75 and Older	9.5%	7.7%
Median Age	44.8	40.6

Source: U.S. Census 5 Year Estimate 2012-2016 (Tables: DP05 and B01001)

2016 Veterans		
	County	PA
Total Veterans	13,622	840,258
Median Veteran Income	\$32,366	\$34,835
Median Non-Veteran Income	\$26,958	\$27,380
Veteran Unemployment Rate	7.7%	6.3%

Source: U.S. Census 5 Year Estimate 2012-2016 (Table: S2101)

Online Job Postings		
	County	PA
December 2017	1,258	182,801
December 2016	1,062	191,090
Annual Volume Change	196	-8,289
Annual Percent Change	18.5%	-4.3%

Source: The Conference Board Help Wanted OnLine™

Income		
	County	PA
Per Capita Personal Income	\$43,659	\$50,742
Total Personal Income	\$7,309,776	\$648,694,472
Median Household Income	\$51,887	\$54,895
Median Family Income	\$66,948	\$69,960

Note: Total Personal Income is displayed in thousands.
 Note: Median Incomes are in 2016 adjusted dollars.
 Source: Personal Incomes - Bureau of Economic Analysis (BEA) - 2016
 Source: Median Incomes - U.S. Census 2012-2016 (Tables: B19013 & B19113)

Local Area Unemployment Statistics		
Dec 2017	County	PA
Unemployment Rate	5.5%	4.7%
Labor Force	85,000	6,392,000
Employed	80,300	6,093,000
Unemployed	4,700	299,000

Notes: Current month's data are preliminary. Data are Seasonally Adjusted.

Unemployment Compensation Exhaustees				
Jan 2017 to Dec 2017	Volume		Percent of Total	
	County	PA	County	PA
Natural Resources & Mining	10	970	0.5%	1.0%
Construction	230	9,730	15.0%	10.5%
Manufacturing	170	11,810	11.5%	12.5%
Trade, Transportation & Utilities	340	19,480	22.5%	20.5%
Information	30	1,730	2.0%	2.0%
Financial Activities	90	4,960	6.0%	5.5%
Professional & Business Services	330	18,070	22.0%	19.0%
Education & Health Services	150	14,740	10.0%	15.5%
Leisure & Hospitality	80	6,830	5.5%	7.5%
Other Services	40	2,560	2.5%	2.5%
Government	10	1,040	0.5%	1.0%
Info Not Available	30	2,080	2.0%	2.0%
Total	1,510	94,000	100%	100%

Note: Percentages less than 0.5% will be displayed as 0.0%.
 Source: Pennsylvania Unemployment Compensation System

Top 10 Employers by Employment in Q2 of 2017	
Valley Medical Facilities Inc	
Passavant Memorial Homes	
Wal-Mart Associates Inc	
FirstEnergy Nuclear Operating Co	Beaver County
McGuire Memorial	
Veka Inc	
IPSCO Koppel Tubulars Corp	
Great Arrow Builders LLC	
Heritage Valley Medical Group Inc	

Source: Quarterly Census of Employment and Wages

Quarterly Census of Employment and Wages, 2016 Annual Averages

NAICS	NAICS Description	Estab.		Employment		Employment %		Wages	
		County	LQ	County	PA	County	PA	County	PA
	Total, All Industries	3,660	1.00	51,139	5,737,788	100.0%	100.0%	\$41,863	\$52,460
11	Agriculture, Forestry, Fishing and Hunting	12	0.19	42	24,595	0.1%	0.4%	\$41,467	\$34,031
21	Mining, Quarrying, and Oil & Gas	11	0.60	130	24,297	0.3%	0.4%	\$95,398	\$80,440
22	Utilities	33	5.83	1,829	35,193	3.6%	0.6%	\$103,300	\$93,686
23	Construction	348	1.13	2,480	247,187	4.8%	4.3%	\$53,293	\$61,139
31-33	Manufacturing	175	1.22	6,091	559,318	11.9%	9.7%	\$55,483	\$59,809
42	Wholesale Trade	117	0.64	1,253	219,702	2.5%	3.8%	\$55,029	\$77,582
44-45	Retail Trade	480	1.21	6,871	637,984	13.4%	11.1%	\$24,594	\$27,813
48-49	Transportation and Warehousing	161	1.14	2,922	288,064	5.7%	5.0%	\$45,962	\$46,760
51	Information	25	0.44	347	87,874	0.7%	1.5%	\$34,260	\$74,004
52	Finance and Insurance	175	0.47	1,066	257,059	2.1%	4.5%	\$49,712	\$87,948
53	Real Estate and Rental and Leasing	72	0.71	396	62,949	0.8%	1.1%	\$44,590	\$57,700
54	Professional and Technical Services	247	0.67	2,111	353,834	4.1%	6.2%	\$50,450	\$88,700
55	Management of Companies and Enterprises	22	0.21	254	134,891	0.5%	2.4%	\$73,097	\$123,007
56	Administrative and Waste Services	167	0.51	1,449	316,046	2.8%	5.5%	\$33,899	\$34,313
61	Educational Services	109	1.12	4,756	478,515	9.3%	8.3%	\$46,032	\$54,470
62	Health Care and Social Assistance	693	1.13	10,269	1,016,283	20.1%	17.7%	\$41,436	\$48,369
71	Arts, Entertainment, and Recreation	48	0.66	575	97,327	1.1%	1.7%	\$17,861	\$32,260
72	Accommodation and Food Services	321	1.06	4,384	463,254	8.6%	8.1%	\$13,422	\$17,668
81	Other Services (Except Public Administration)	365	1.10	1,942	197,931	3.8%	3.4%	\$21,133	\$31,936
92	Public Administration	81	0.94	1,972	235,482	3.9%	4.1%	\$42,642	\$58,006
	Total, Suppressed Local Industries	0		0		0.0%			

Company Ownership

Total, All Ownership	3,660	1.00	51,139	5,737,788	100.0%	100.0%	\$41,863	\$52,460
Private Ownership	3,444	0.98	44,015	5,062,701	86.1%	88.2%	\$41,132	\$52,105
Federal Ownership	25	0.35	301	96,722	0.6%	1.7%	\$58,793	\$72,521
State Ownership	22	0.50	596	134,078	1.2%	2.3%	\$48,475	\$58,534
Local Ownership	169	1.57	6,228	444,287	12.2%	7.7%	\$45,576	\$50,302

Notes: 'Estab.'-Establishments. 'LQ'-(Location Quotient) is the percent of county employment by sector divided by the percent of PA's employment by sector.

Occupational Wages, 2016 Annual Averages

SOC Code	Major Occupational Group	Entry-Level Wage		Average Wage	
		County	PA	County	PA
00-0000	Total, All Occupations	\$20,967	\$21,180	\$43,871	\$47,540
11-0000	Management	\$53,264	\$59,330	\$107,012	\$121,830
13-0000	Business & Financial Operations	\$41,415	\$42,350	\$71,927	\$72,010
15-0000	Computer & Mathematical	\$44,173	\$47,270	\$88,251	\$81,100
17-0000	Architecture & Engineering	\$48,919	\$46,120	\$79,874	\$77,940
19-0000	Life, Physical & Social Science	\$53,508	\$37,870	\$75,537	\$69,000
21-0000	Community & Social Services	\$24,961	\$27,080	\$40,150	\$42,840
23-0000	Legal	\$28,298	\$42,190	\$40,566	\$102,140
25-0000	Education, Training & Library	\$32,703	\$26,180	\$53,125	\$55,760
27-0000	Arts, Design, Entertainment, Sports & Media	\$17,788	\$22,970	\$34,080	\$49,500
29-0000	Healthcare Practitioners & Technical	\$33,964	\$37,020	\$68,597	\$74,590
31-0000	Healthcare Support	\$18,064	\$21,210	\$27,081	\$29,880
33-0000	Protective Service	\$25,373	\$20,880	\$43,280	\$43,740
35-0000	Food Preparation & Serving Related	\$17,171	\$17,250	\$21,401	\$22,530
37-0000	Building & Grounds Cleaning & Maintenance	\$17,528	\$18,660	\$26,045	\$27,550
39-0000	Personal Care & Service	\$17,163	\$17,770	\$23,560	\$25,190
41-0000	Sales & Related	\$17,479	\$17,790	\$32,018	\$40,850
43-0000	Office & Administrative Support	\$21,314	\$22,510	\$35,807	\$36,500
45-0000	Farming, Fishing & Forestry	\$33,040	\$19,190	\$43,992	\$31,120
47-0000	Construction & Extraction	\$30,906	\$29,860	\$47,129	\$49,610
49-0000	Installation, Maintenance & Repair	\$25,996	\$27,650	\$43,237	\$45,620
51-0000	Production	\$25,002	\$23,850	\$40,864	\$38,130
53-0000	Transportation & Material Moving	\$25,012	\$20,900	\$39,926	\$35,590

Note: 'ND' represents Non-Disclosable information.