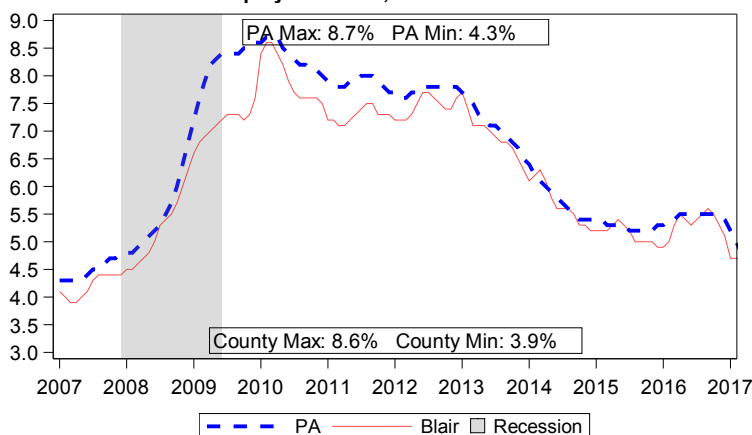


Unemployment Rate, Jan 2007 to Dec 2017



2016 Population		
Demographic	County	PA
Total Population	125,917	12,783,977
Female	64,263	6,528,935
Male	61,654	6,255,042

Population by Race		
White	95.8%	81.4%
Black	1.6%	11.0%
Other	2.6%	7.6%
Hispanic Origin (all races)	1.1%	6.6%

Population by Age		
Ages 0 to 17	20.7%	21.2%
Ages 18 to 24	8.8%	9.6%
Ages 25 to 34	11.4%	12.8%
Ages 35 to 44	11.7%	11.9%
Ages 45 to 54	13.5%	14.1%
Ages 55 to 64	14.6%	13.8%
Ages 65 to 74	10.2%	9.0%
Ages 75 and Older	9.1%	7.7%
Median Age	43.1	40.6

Source: U.S. Census 5 Year Estimate 2012-2016 (Tables: DP05 and B01001)

2016 Veterans		
	County	PA
Total Veterans	11,121	840,258
Median Veteran Income	\$31,083	\$34,835
Median Non-Veteran Income	\$23,247	\$27,380
Veteran Unemployment Rate	7.2%	6.3%

Source: U.S. Census 5 Year Estimate 2012-2016 (Table: S2101)

Online Job Postings		
	County	PA
December 2017	1,494	182,801
December 2016	1,301	191,090
Annual Volume Change	193	-8,289
Annual Percent Change	14.8%	-4.3%

Source: The Conference Board Help Wanted OnLine™

Income		
	County	PA
Per Capita Personal Income	\$41,754	\$50,742
Total Personal Income	\$5,204,692	\$648,694,472
Median Household Income	\$44,033	\$54,895
Median Family Income	\$59,092	\$69,960

Note: Total Personal Income is displayed in thousands.
 Note: Median Incomes are in 2016 adjusted dollars.
 Source: Personal Incomes - Bureau of Economic Analysis (BEA) - 2016
 Source: Median Incomes - U.S. Census 2012-2016 (Tables: B19013 & B19113)

Local Area Unemployment Statistics		
Dec 2017	County	PA
Unemployment Rate	4.5%	4.7%
Labor Force	58,800	6,392,000
Employed	56,200	6,093,000
Unemployed	2,700	299,000

Notes: Current month's data are preliminary. Data are Seasonally Adjusted.

Unemployment Compensation Exhaustees				
Jan 2017 to Dec 2017	Volume		Percent of Total	
	County	PA	County	PA
Natural Resources & Mining	10	970	1.5%	1.0%
Construction	110	9,730	14.0%	10.5%
Manufacturing	110	11,810	14.0%	12.5%
Trade, Transportation & Utilities	160	19,480	20.0%	20.5%
Information	20	1,730	2.5%	2.0%
Financial Activities	30	4,960	4.0%	5.5%
Professional & Business Services	120	18,070	15.0%	19.0%
Education & Health Services	130	14,740	16.5%	15.5%
Leisure & Hospitality	60	6,830	7.5%	7.5%
Other Services	30	2,560	4.0%	2.5%
Government	10	1,040	1.5%	1.0%
Info Not Available	10	2,080	1.5%	2.0%
Total	800	94,000	100%	100%

Note: Percentages less than 0.5% will be displayed as 0.0%.
 Source: Pennsylvania Unemployment Compensation System

Top 10 Employers by Employment in Q2 of 2017	
UPMC Altoona	
Sheetz Inc	
State Government	
Altoona Area School District	
Federal Government	
Wal-Mart Associates Inc	
Delgrosso's Amusement Park	
Sheetz Distribution Services LLC	
Holidaysburg Area School District	
Blair County	

Source: Quarterly Census of Employment and Wages

Quarterly Census of Employment and Wages, 2016 Annual Averages

NAICS	NAICS Description	Estab.		Employment		Employment %		Wages	
		County	LQ	County	PA	County	PA	County	PA
	Total, All Industries	3,362	1.00	58,532	5,737,788	100.0%	100.0%	\$38,867	\$52,460
11	Agriculture, Forestry, Fishing and Hunting	27	1.11	279	24,595	0.5%	0.4%	\$27,229	\$34,031
21	Mining, Quarrying, and Oil & Gas	6	ND	ND	24,297	ND	0.4%	ND	\$80,440
22	Utilities	8	ND	ND	35,193	ND	0.6%	ND	\$93,686
23	Construction	301	1.02	2,570	247,187	4.4%	4.3%	\$41,376	\$61,139
31-33	Manufacturing	143	1.30	7,392	559,318	12.6%	9.7%	\$48,058	\$59,809
42	Wholesale Trade	155	1.00	2,239	219,702	3.8%	3.8%	\$46,610	\$77,582
44-45	Retail Trade	528	1.30	8,448	637,984	14.4%	11.1%	\$25,828	\$27,813
48-49	Transportation and Warehousing	107	1.01	2,964	288,064	5.1%	5.0%	\$48,756	\$46,760
51	Information	36	0.96	860	87,874	1.5%	1.5%	\$46,174	\$74,004
52	Finance and Insurance	174	0.40	1,046	257,059	1.8%	4.5%	\$54,416	\$87,948
53	Real Estate and Rental and Leasing	102	0.83	533	62,949	0.9%	1.1%	\$33,287	\$57,700
54	Professional and Technical Services	190	0.55	1,983	353,834	3.4%	6.2%	\$54,423	\$88,700
55	Management of Companies and Enterprises	24	0.67	921	134,891	1.6%	2.4%	\$76,915	\$123,007
56	Administrative and Waste Services	157	0.82	2,650	316,046	4.5%	5.5%	\$25,720	\$34,313
61	Educational Services	89	0.78	3,823	478,515	6.5%	8.3%	\$41,169	\$54,470
62	Health Care and Social Assistance	600	1.27	13,187	1,016,283	22.5%	17.7%	\$44,706	\$48,369
71	Arts, Entertainment, and Recreation	40	0.90	897	97,327	1.5%	1.7%	\$13,452	\$32,260
72	Accommodation and Food Services	281	0.99	4,686	463,254	8.0%	8.1%	\$14,299	\$17,668
81	Other Services (Except Public Administration)	333	1.02	2,050	197,931	3.5%	3.4%	\$25,246	\$31,936
92	Public Administration	62	0.63	1,515	235,482	2.6%	4.1%	\$43,514	\$58,006
	Total, Suppressed Local Industries	14		256		0.4%			

Company Ownership

Total, All Ownership	3,362	1.00	58,532	5,737,788	100.0%	100.0%	\$38,867	\$52,460
Private Ownership	3,208	0.99	50,964	5,062,701	87.1%	88.2%	\$37,828	\$52,105
Federal Ownership	29	1.01	1,000	96,722	1.7%	1.7%	\$64,147	\$72,521
State Ownership	22	1.57	2,154	134,078	3.7%	2.3%	\$48,657	\$58,534
Local Ownership	104	0.97	4,415	444,287	7.5%	7.7%	\$40,354	\$50,302

Notes: 'Estab.'-Establishments. 'LQ'-(Location Quotient) is the percent of county employment by sector divided by the percent of PA's employment by sector.

Occupational Wages, 2016 Annual Averages

SOC Code	Major Occupational Group	Entry-Level Wage		Average Wage	
		County	PA	County	PA
00-0000	Total, All Occupations	\$18,960	\$21,180	\$39,160	\$47,540
11-0000	Management	\$45,960	\$59,330	\$93,530	\$121,830
13-0000	Business & Financial Operations	\$34,850	\$42,350	\$63,150	\$72,010
15-0000	Computer & Mathematical	\$30,980	\$47,270	\$55,070	\$81,100
17-0000	Architecture & Engineering	\$42,520	\$46,120	\$66,460	\$77,940
19-0000	Life, Physical & Social Science	\$35,870	\$37,870	\$65,380	\$69,000
21-0000	Community & Social Services	\$23,580	\$27,080	\$39,770	\$42,840
23-0000	Legal	\$24,500	\$42,190	\$47,240	\$102,140
25-0000	Education, Training & Library	\$21,420	\$26,180	\$47,780	\$55,760
27-0000	Arts, Design, Entertainment, Sports & Media	\$17,570	\$22,970	\$35,120	\$49,500
29-0000	Healthcare Practitioners & Technical	\$36,870	\$37,020	\$75,590	\$74,590
31-0000	Healthcare Support	\$21,900	\$21,210	\$29,630	\$29,880
33-0000	Protective Service	\$18,630	\$20,880	\$37,550	\$43,740
35-0000	Food Preparation & Serving Related	\$17,230	\$17,250	\$21,620	\$22,530
37-0000	Building & Grounds Cleaning & Maintenance	\$17,180	\$18,660	\$25,280	\$27,550
39-0000	Personal Care & Service	\$17,270	\$17,770	\$21,640	\$25,190
41-0000	Sales & Related	\$17,330	\$17,790	\$30,600	\$40,850
43-0000	Office & Administrative Support	\$19,190	\$22,510	\$30,930	\$36,500
45-0000	Farming, Fishing & Forestry	\$22,000	\$19,190	\$42,000	\$31,120
47-0000	Construction & Extraction	\$25,200	\$29,860	\$38,880	\$49,610
49-0000	Installation, Maintenance & Repair	\$24,290	\$27,650	\$41,170	\$45,620
51-0000	Production	\$21,690	\$23,850	\$35,230	\$38,130
53-0000	Transportation & Material Moving	\$18,970	\$20,900	\$32,400	\$35,590

Note: 'ND' represents Non-Disclosable information.